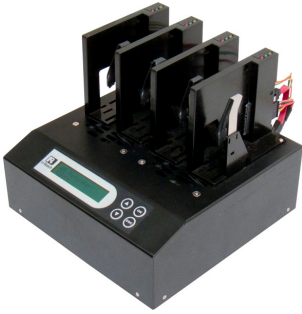


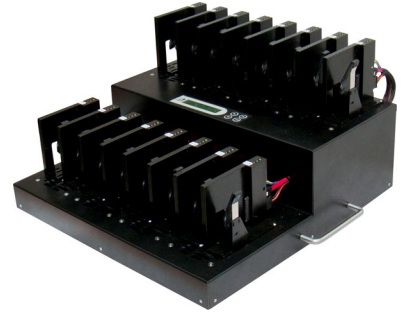
# Hard Disc Drive Duplicator - IT Series by U-Reach



**IT300**



**IT700**



**IT1500**

The IT Series Hard Disc Drive (HDD) duplicator by U-Reach Inc. is specially designed for professional use. It supports high speed duplication up to 110MB/sec base on real test results. It supports Quick, All Partition, and Entire Disc copy modes plus a DoD erase mode so the unit can meet the needs of a variety of duplication tasks.

The Quick copy mode copies only the data and system file area making for very fast copies. Quick copy mode supports NTFS, Linux (Ext2/Ext3), and FAT/FAT32 sources.

The Partition copy keeps all partitions intact using the same size as the original. If copying to a larger HDD only the area assigned to a partition is copied.

The Entire Disc Copy makes a clone of the entire drive, including area not assigned to a partition and can even copy drives of an unknown format.

The Erase function supports three modes, Quick Erase that only erases the index of the drive, Full Erase which will erase whole sectors on the drive, and DoD erase which complies with DoD 5220 standards to erase the drive three times bit-by-bit to insure the data was fully deleted.

The easily replaceable SATA interface module can greatly enhance copying efficiency. Unlike other traditional HDD duplicators where you need to plug and pull a data cable to each HDD one by one, the IT Series uses a no touch SATA connection. This greatly enhances the efficiency of the duplication operation.

The module SATA interface makes replacing the SATA interface easy and fast. As an IT professional, you know the interface module is a consumable part in the duplication process due to the number of connections and disconnections made to drives. The replaceable modules gives the IT Series an advantage over many other units. To replace the module you simply remove a screw, exchange the module, replace the screw and you're back up and running in seconds.

## Features:

- Supports high speed, up to 110MB/second based on real time test
- Supports 2.5" and 3.5" SATA HDDs
- Supports IDE HDD via SATA-IDE
- Revolutionary easily replaceable SATA interface module to alleviate the hassle of changing consumable parts that wear out.
- Easy to connect HDDs.
- Easy to connect IDE converter.
- Auto power control - when copying is finished the unit will automatically turn off power to protect the HDD during the removal from the system.
- Supports DoD erasing.
- Supports various HDD formats (NTFS, Linux, FAT)
- Supports duplication of different sized HDDs

## Specifications:

	<b>IT300</b>	<b>IT700</b>	<b>IT1500</b>
<b>Target</b>	3	7	15
<b>Operation</b>	Stand alone	Stand alone	Stand alone
<b>Max. Capacity</b>	At least 3TB	At least 3TB	At least 3TB
<b>Bandwidth</b>	110MB/Sec	110MB/Sec	110MB/Sec
<b>HDD Types</b>	3.5" SATA, 2.5" SATA, IDE (with converter)	3.5" SATA, 2.5" SATA, IDE (with converter)	3.5" SATA, 2.5" SATA, IDE (with converter)
<b>Duplication modes</b>	Quick copy All Partitions Entire HDD DoD Erase	Quick copy All Partitions Entire HDD DoD Erase	Quick copy All Partitions Entire HDD DoD Erase
<b>Format support</b>	All formats	All formats	All formats
<b>Quick copy format</b>	FAT16/FAT32, NTFS, Linux(ext2/ext3)	FAT16/FAT32, NTFS, Linux(ext2/ext3)	FAT16/FAT32, NTFS, Linux(ext2/ext3)
<b>Display</b>	2x20 Monochrome LCD	2x20 Monochrome LCD	2x20 Monochrome LCD
<b>LED Display</b>	Yellow(power), Green(pass), Red(fail)	Yellow(power), Green(pass), Red(fail)	Yellow(power), Green(pass), Red(fail)
<b>Control Button</b>	4 push button (forward, backward, OK, and escape)	4 push button (forward, backward, OK, and escape)	4 push button (forward, backward, OK, and escape)
<b>Power Supply</b>	200watt, Adjustable voltage 100v-240v, 50/60Hz	200watt, Adjustable voltage 100v-240v, 50/60Hz	400watt, Adjustable voltage 115v-230v, 50/60Hz
<b>Safety</b>	CF, FCC, ROHS	CF, FCC, ROHS	CF, FCC, ROHS
<b>Dimension</b>	24.6x24.5x20.6cm 9.7 x 9.6 x 8.1 inches	47.9x24.5x20.6cm 18.9 x 9.5 x 8.1 inches	54x47x47.5cm 21.3 x 18.5 x 18.7 inches
<b>Weight</b>	5.4KG, 11.9lbs	9.6GKG, 21.2lbs	13.8 KG, 30.4lbs
<b>Accessory (optional)</b>	IDE-SATA converter	IDE-SATA converter	IDE-SATA converter